



**PHILIPS**

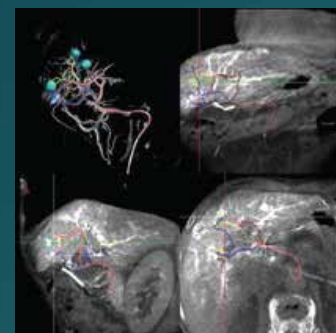
Oncosuite

# Oncosuite

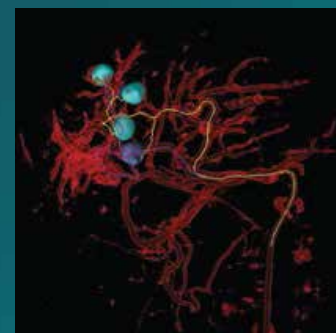
Greater insight and confidence  
in finding and treating the problem

## EmboGuide

- EmboGuide is part of oncosuite, the first complete solution for live image guidance in interventional oncology.
- Segmentation of multiple lesions on MR,CT and XperCT Dual 3D-volumes.
- Automatic feeder finder to multiple lesions.



EmboGuide automatically detects feeding vessels to multiple segmented lesions



EmboGuide roadmap with multiple lesions and automatically highlighted feeding vessels